

Creating an AISBackup Restore CD

Introduction

AISBackup is able to perform most restore procedures under the current running version of Windows, this includes restoring the operating system back to a previous date. However, if major changes have been made to Windows, for example a service pack installation, it may not be possible to restore 'over the top' of the current version of Windows. There are a number of options for restoring your PC to a previous date under these circumstances including:

- **Using another computer:** If you are able to connect the disk from the computer to be restored to a second computer using an IDE / SATA to USB connection lead then you may install AISBackup and restore the backup to your original disk using a second computer.
- **Restore to a second drive or new partition:** This option may be used if you are restoring a backup to a new disk. AISBackup is capable of making and maintaining dual and multi-boot system's so that many versions of Windows can co-exist on the same physical PC.
- **Restoring using a 32 bit version of a Windows Vista or Windows 7 set-up DVD:** This option is similar to using the AISBackup Restore CD, however some extra work is required to skip Windows' own recovery procedures. Please see the PDF guide for using the 32-bit Windows Vista or Windows 7 set-up DVD for disaster recovery restores.
- **Using an AISBackup Restore CD:** An AISBackup restore CD is designed to automatically boot and start a PC directly into AISBackup to perform a restore and this guide documents the procedure for making the Restore CD.

Constraints

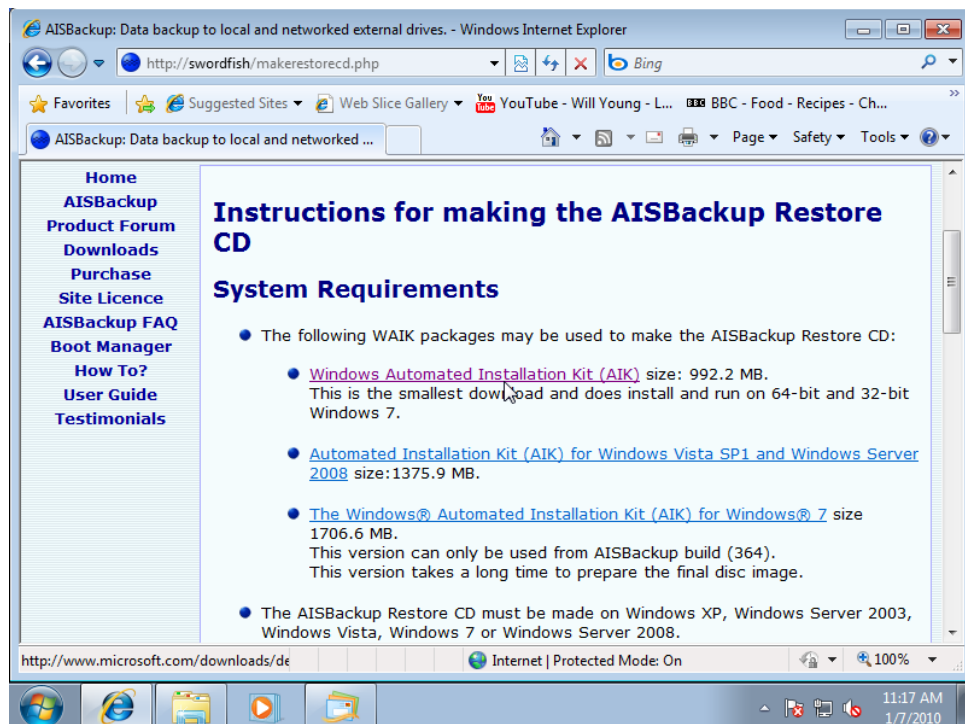
- To make the AISBackup Restore CD a free download of Microsoft's Windows Automated Installation Kit (WAIK) for Windows Vista or Windows 7 is required. The WAIK download file is large and if you have restricted broadband download capacity you may prefer to ask somebody else to download the file for you.
- You must have the ability to make DVD's and CD's on your PC, this is to make the set-up DVD from the WAIK download and the AISBackup Restore CD. You must also have a blank DVD and blank CD.
- The PC to be restored must have at least 512MB installed RAM.
- The trial version of AISBackup does not include backup options on the Restore CD.

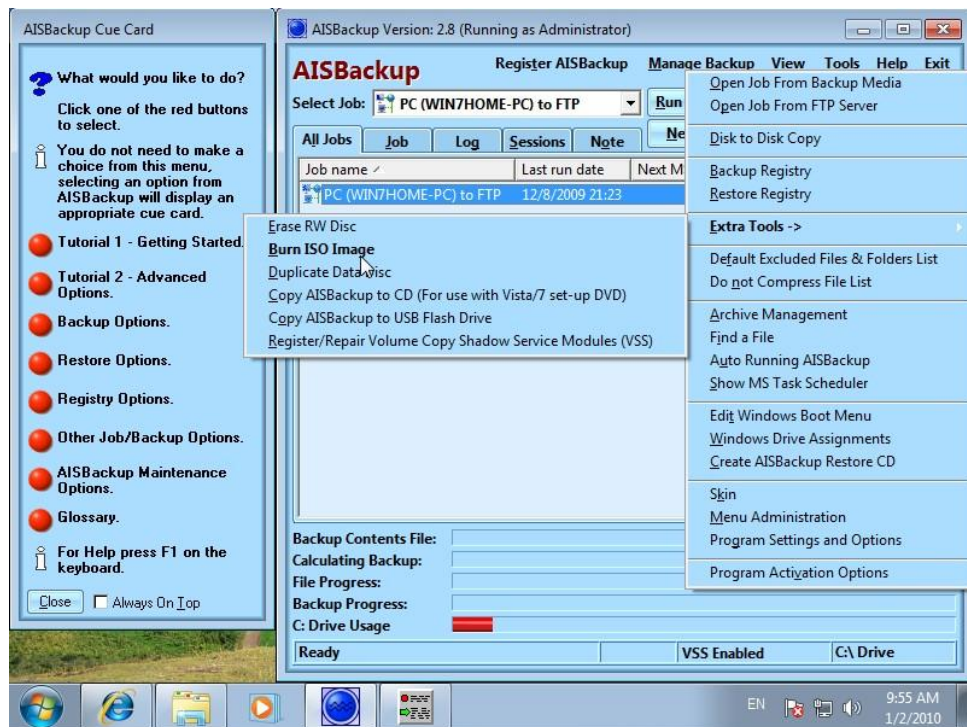
Download and install WAIK

The AISBackup web-site has links to the Windows Automated Installation Kit (WAIK) downloads. choose the web-site menu option **AISBackup / Restore CD / Making the Restore CD**.

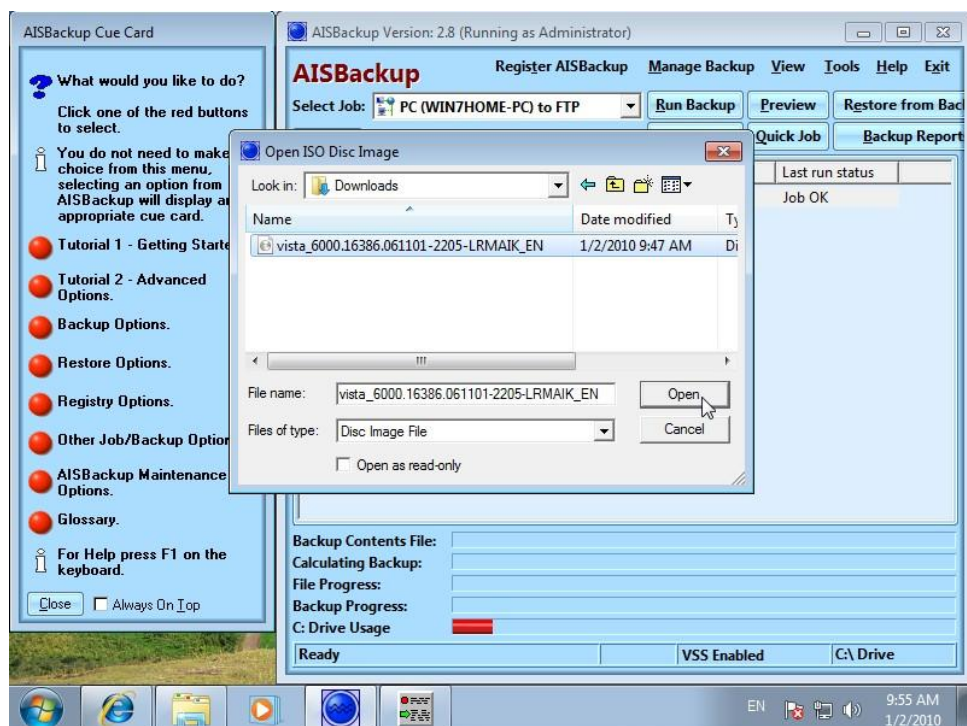


All versions of WAIK may be used to make the AISBackup Restore CD, however some older versions may be withdrawn by Microsoft.

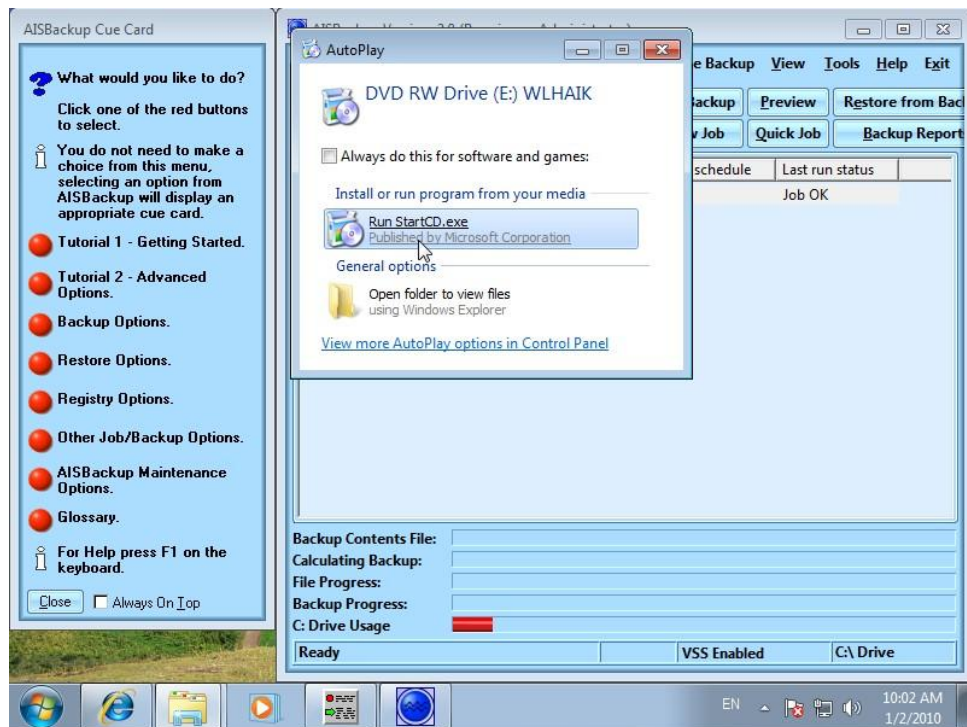




Use AISBackup's **Tools / Extra Tools / Burn ISO Image** option to make the WAIK DVD.



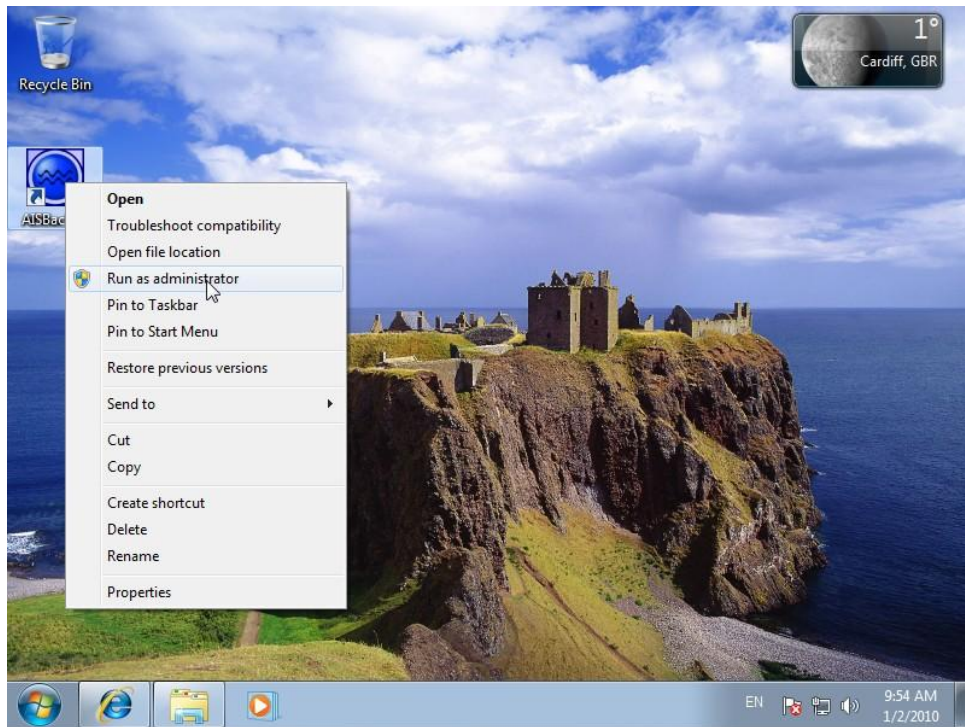
Locate the WAIK image you downloaded earlier.



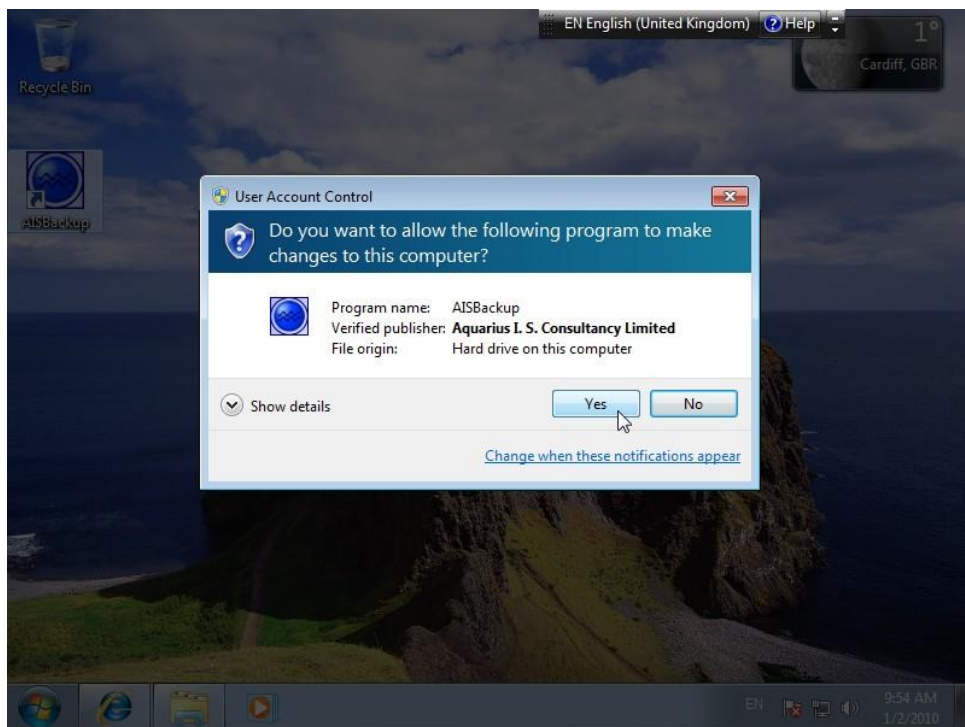
Start the installation of WAIK by using the Auto Play feature.



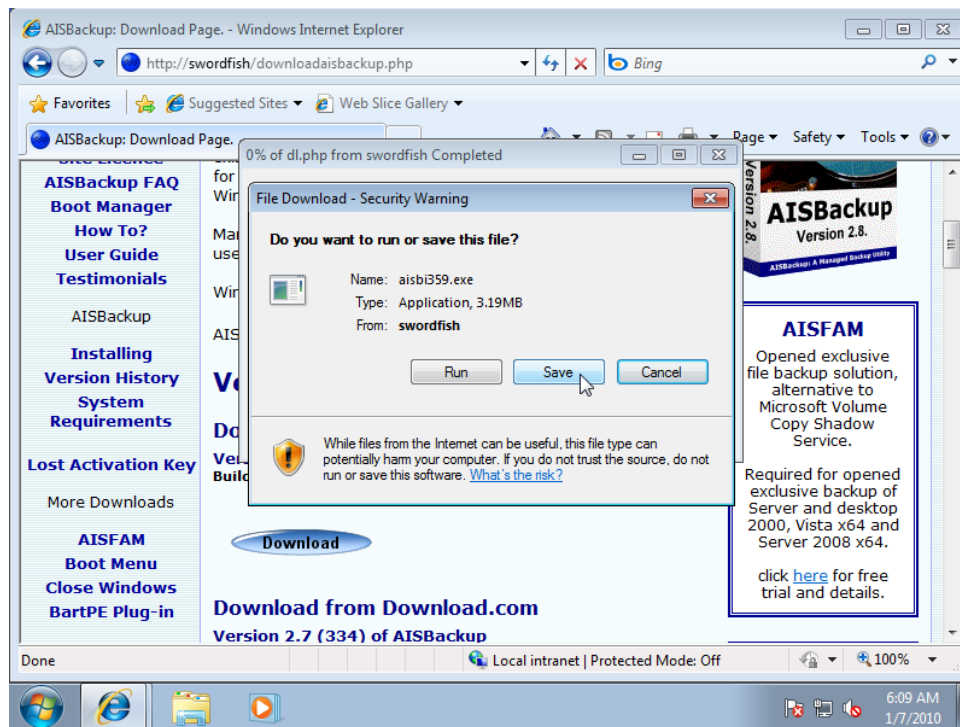
Select Windows AIK Setup but please note that you may have to install .Net Framework and MSXML 6.0 prior to installing WAIK; the Windows AIK Setup will inform you if this is the case. Follow the on screen instructions to install WAIK to the default folders.



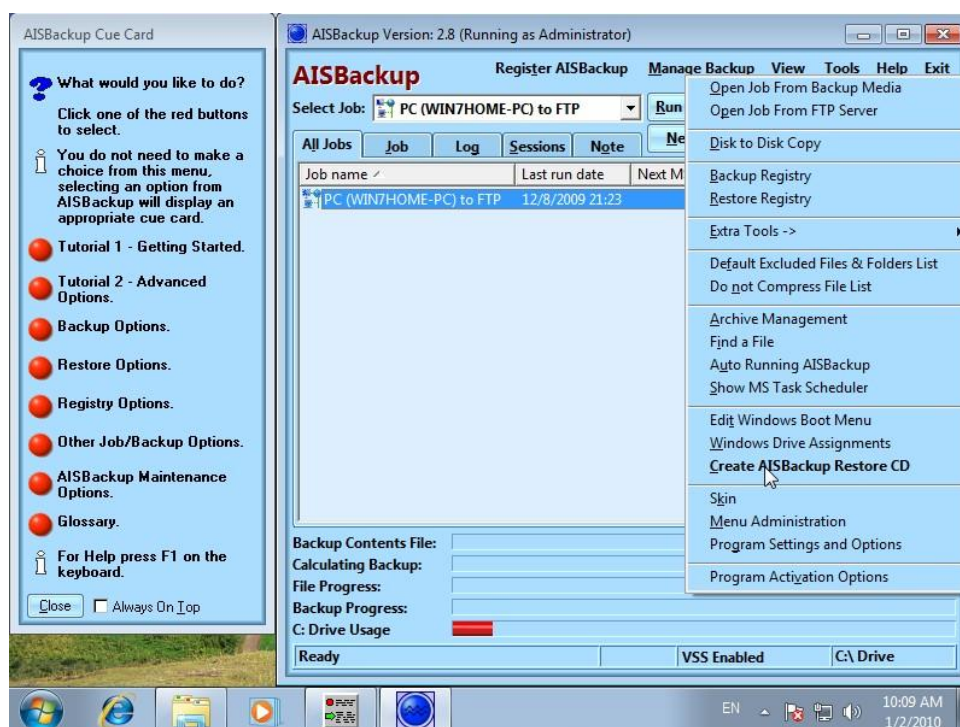
Once WAIK has installed start AISBackup as an Administrator (not required for Windows XP).



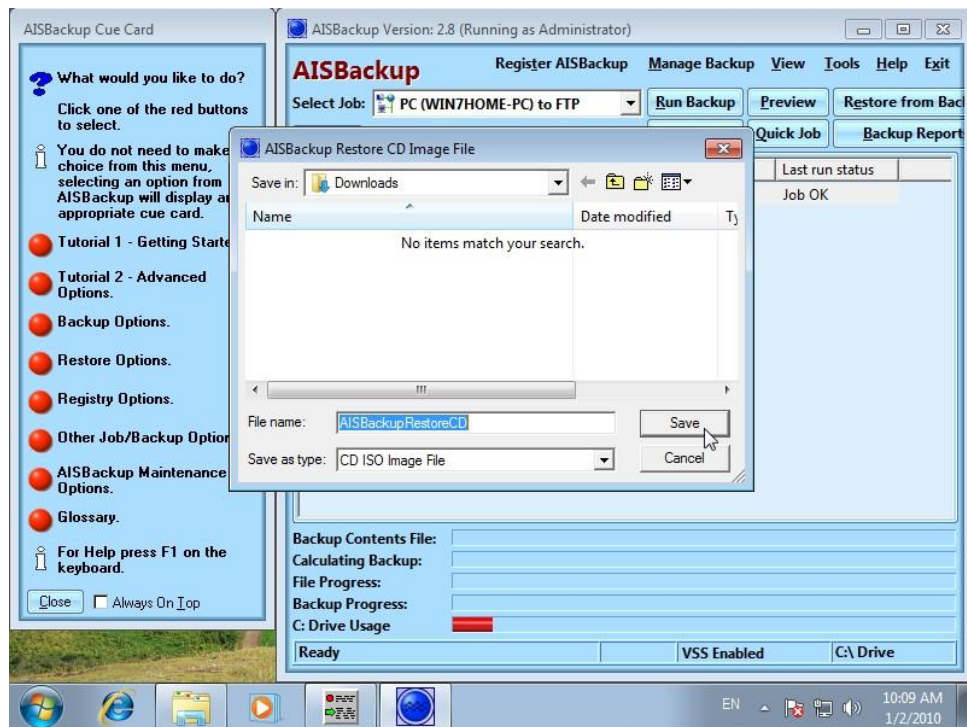
Always ensure that AISBackup has been signed by *Aquarius I. S. Consultancy* or the program is not a genuine copy of AISBackup.



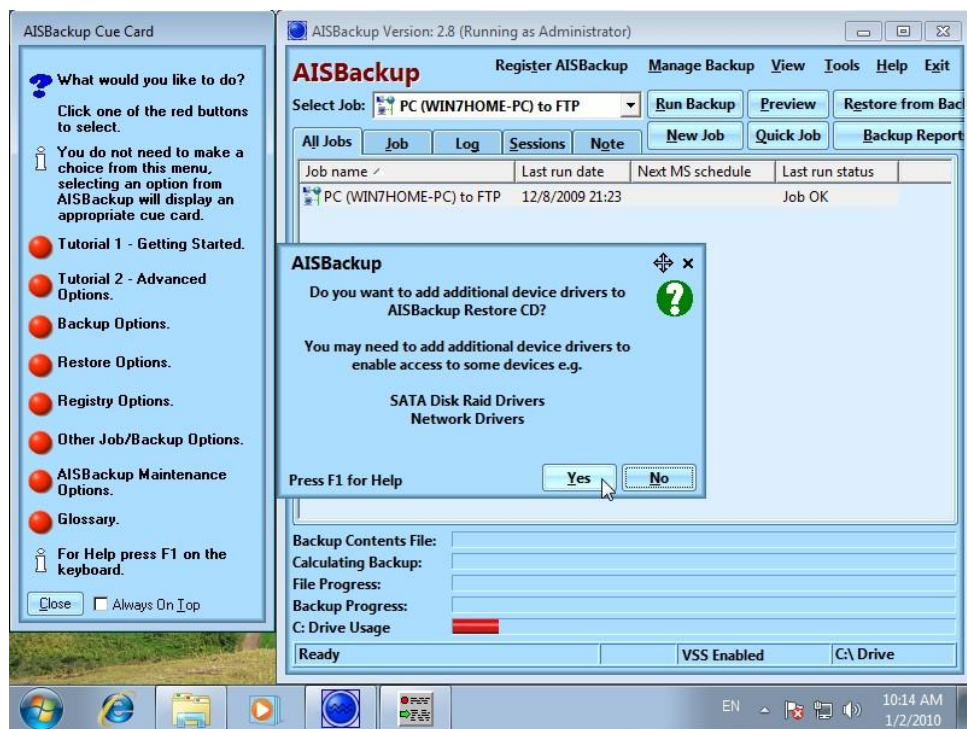
From version 2.8 build 364 AISBackup can also make the Restore CD double as an AISBackup set-up CD, to do this download and save the AISBackup set-up program from <http://www.aiscl.co.uk/downloadaisbackup.php> to the desktop or downloads folder.



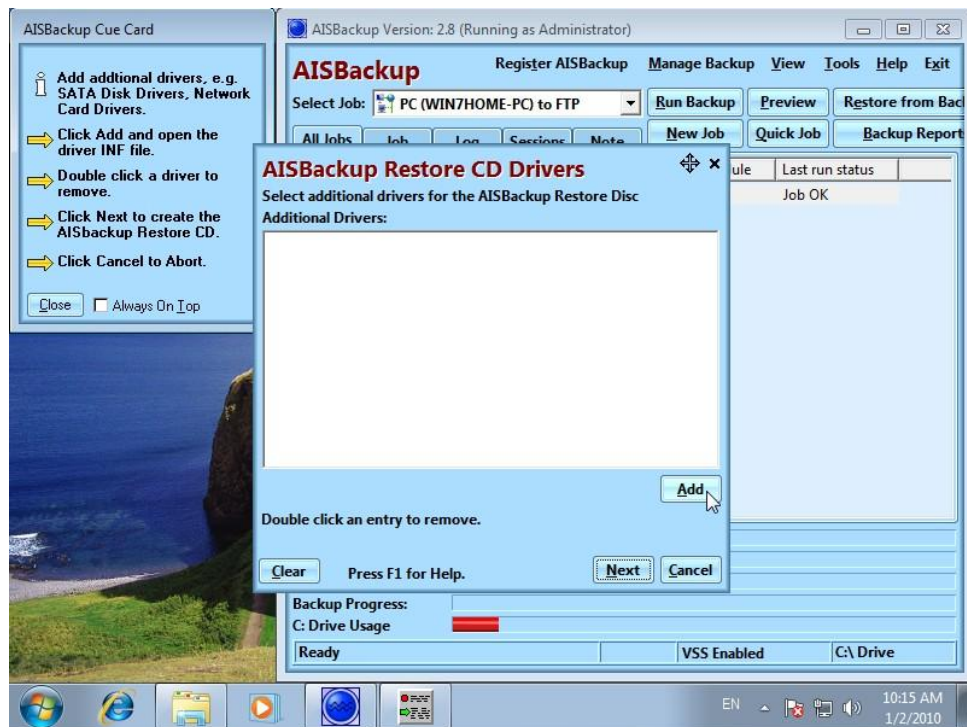
Use the menu option **Tools / Create AISBackup Restore CD**.



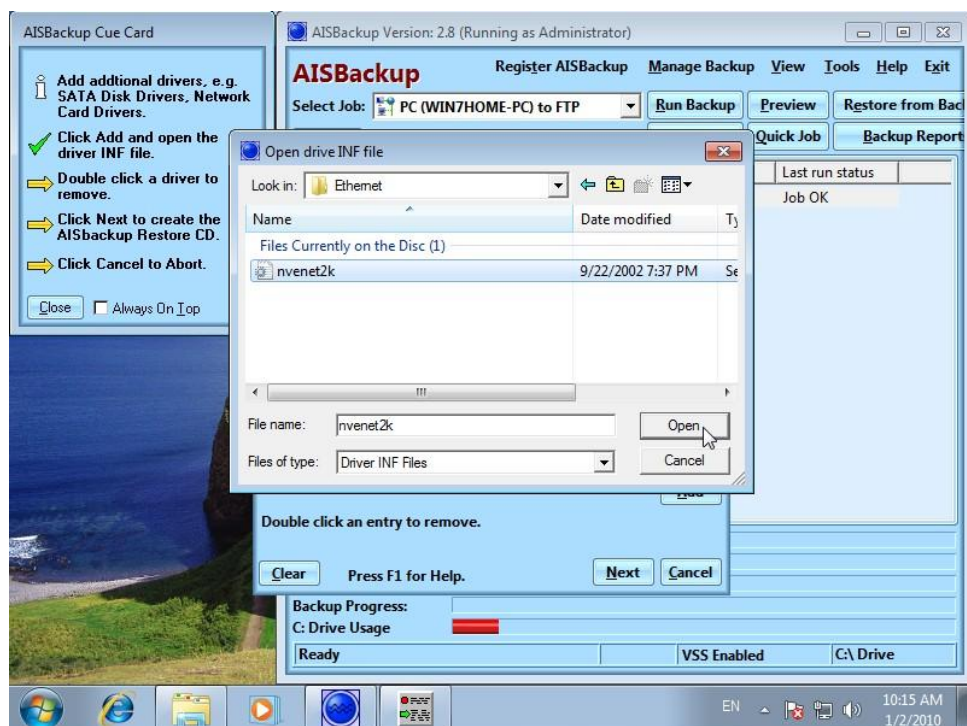
Choose the destination for the AISBackup Restore CD image file, here we have chosen the *Downloads* folder



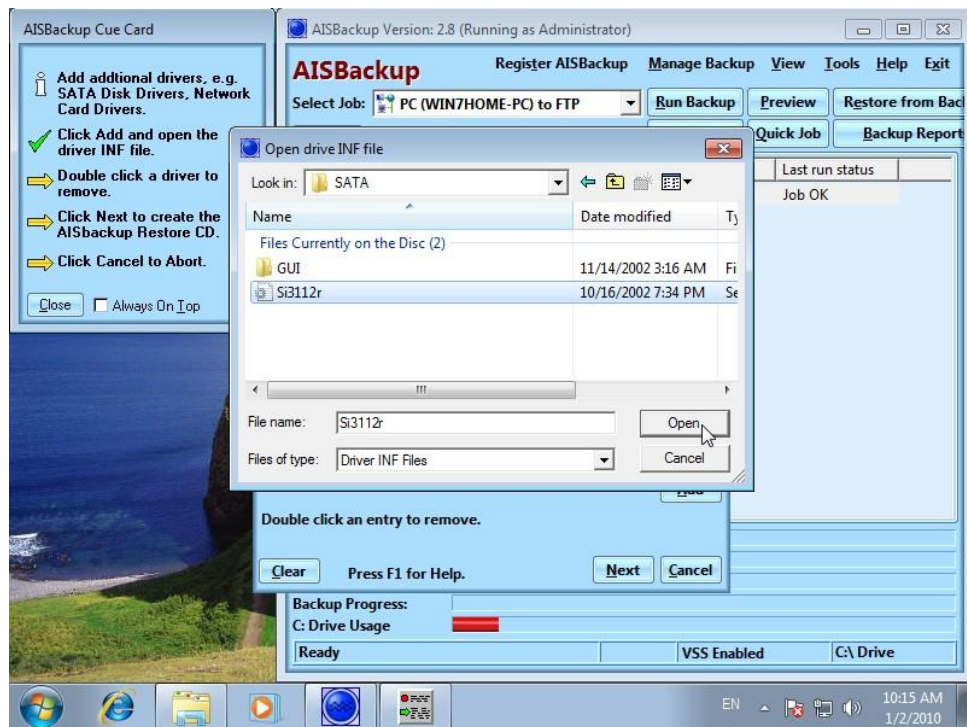
If your PC requires additional device drivers to enable access to network adaptors and disk drives choose **Yes** to the additional device drivers option. In this example we require additional drivers to support the SATA interface and network adaptor in an Asus A7NX8 motherboard.



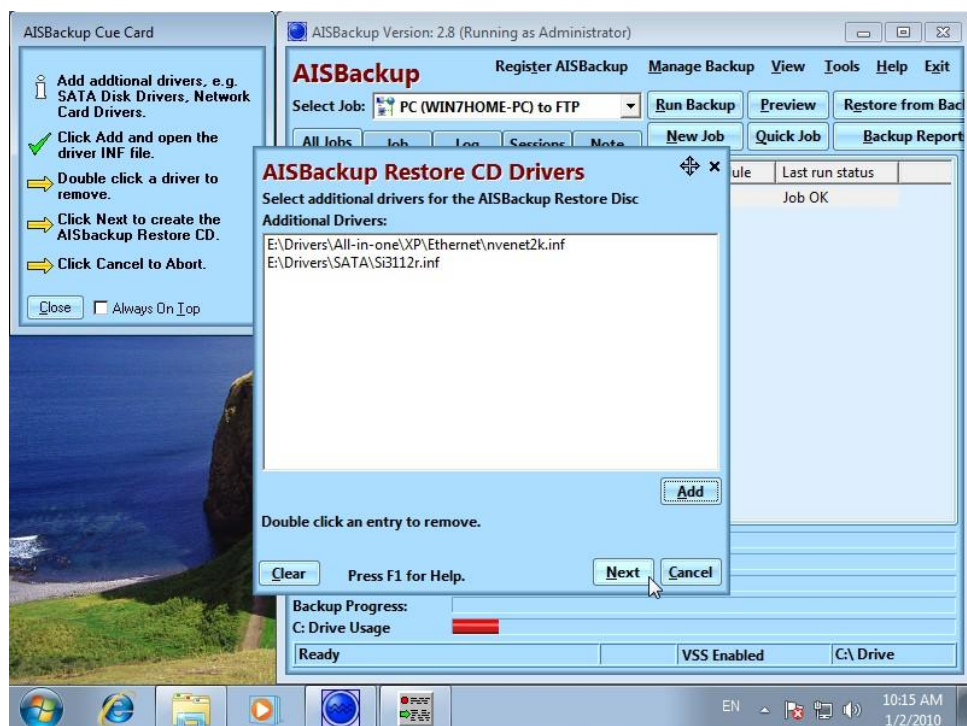
On the *Drivers* option choose **Add**.



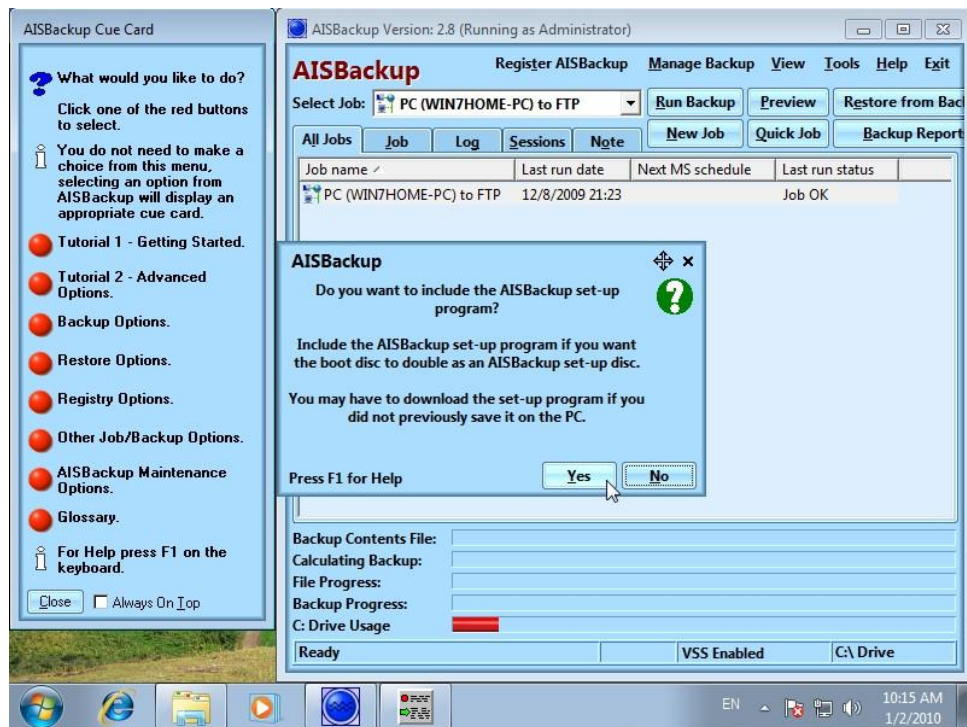
From the Motherboard Drivers CD locate the Ethernet adaptor driver's *inf* file, then click **Open**.



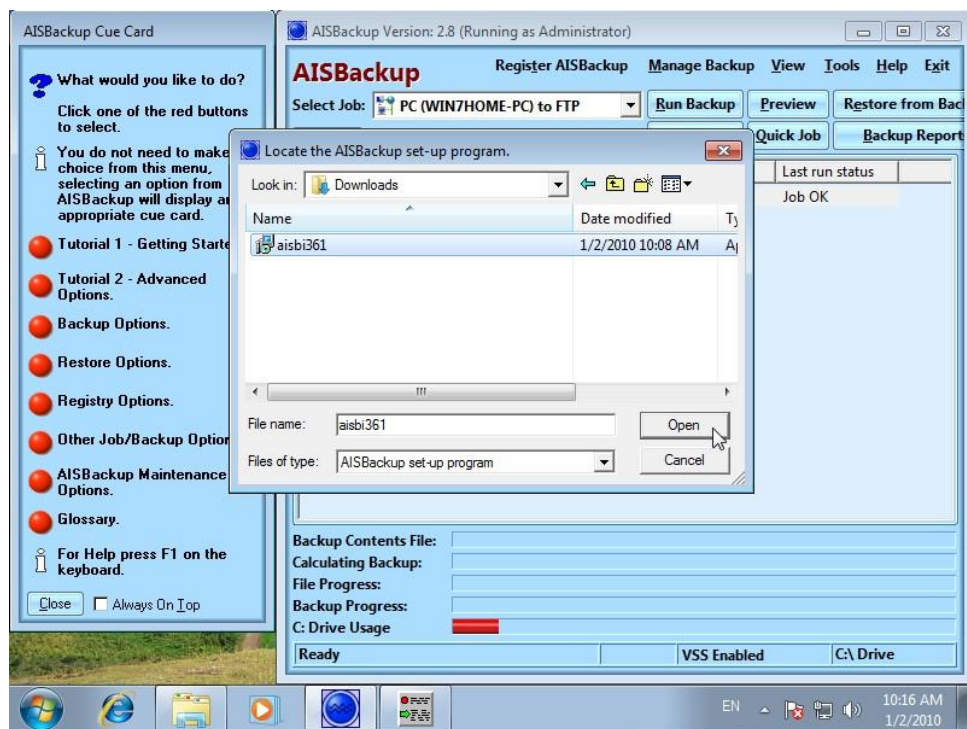
Then choose **Add** once more to locate the SATA driver's *inf* file, then click **Open**.



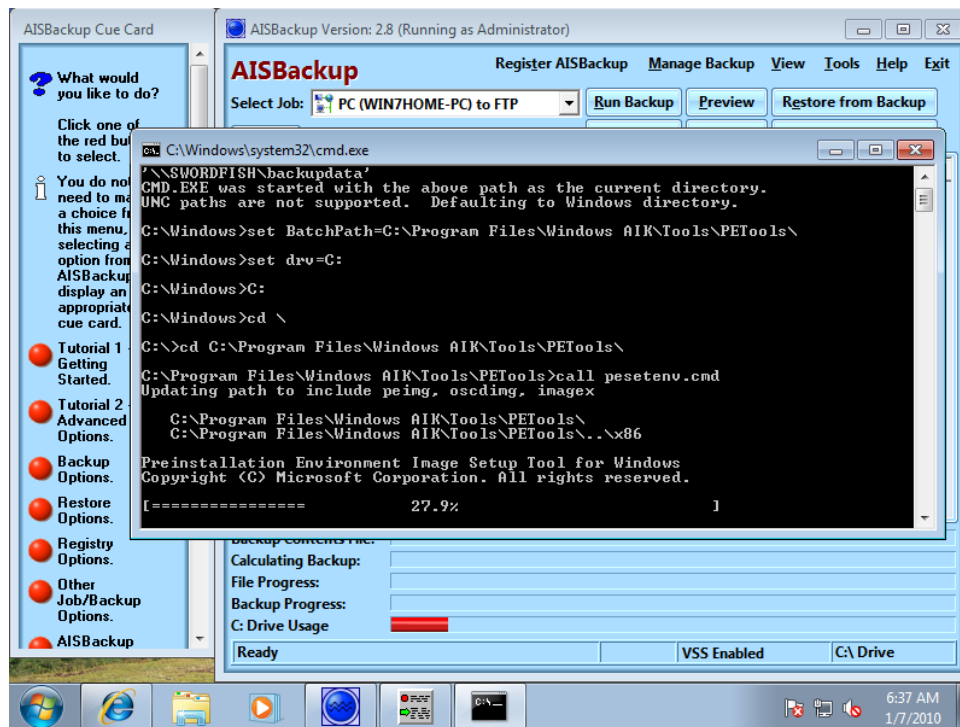
When the drivers have been added click **Next** on the drivers option.



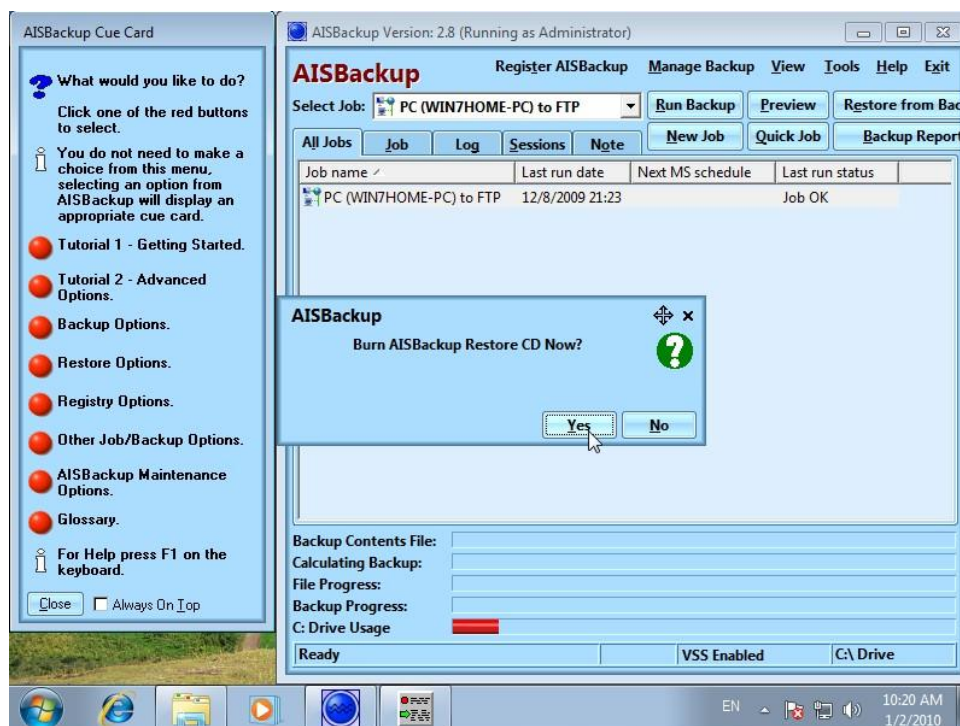
If you would like the AISBackup Restore CD to double as an AISBackup set-up CD then choose **Yes** to the *Include AISBackup set-up program* option.



Locate the AISBackup set-up program that in this example was downloaded to the *Downloads* folder.



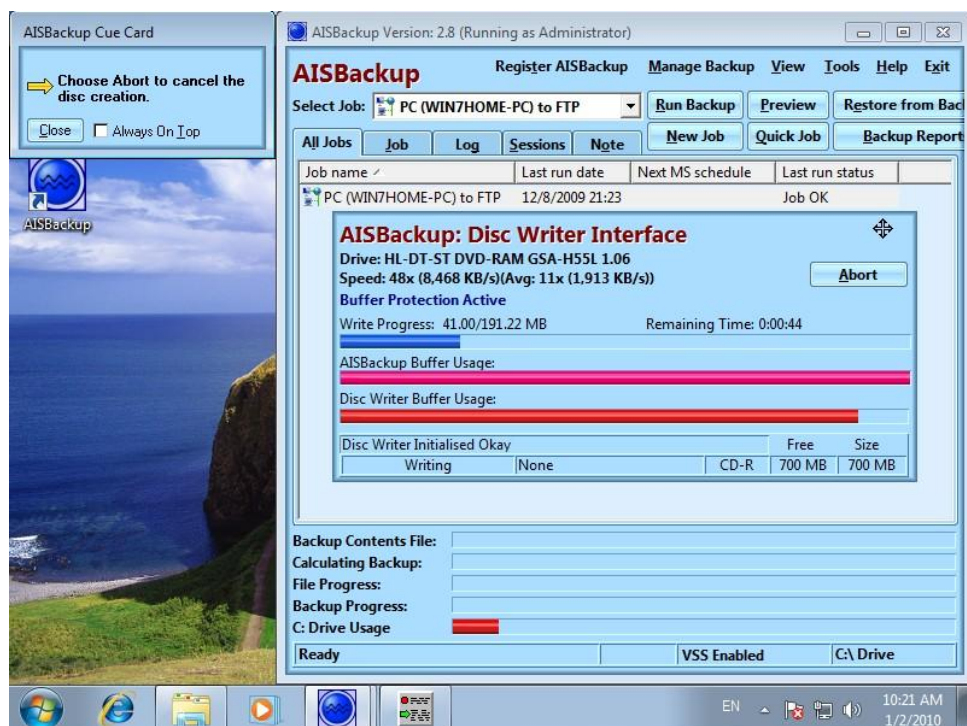
It can take several minutes to make the CD disc image of the AISBackup Restore CD.



Once the CD disc image has been created click **Yes** to burn the CD now, click **No** to burn the CD later using AISBackup's **Tools / Extra Tools / Burn Iso Image** menu option.

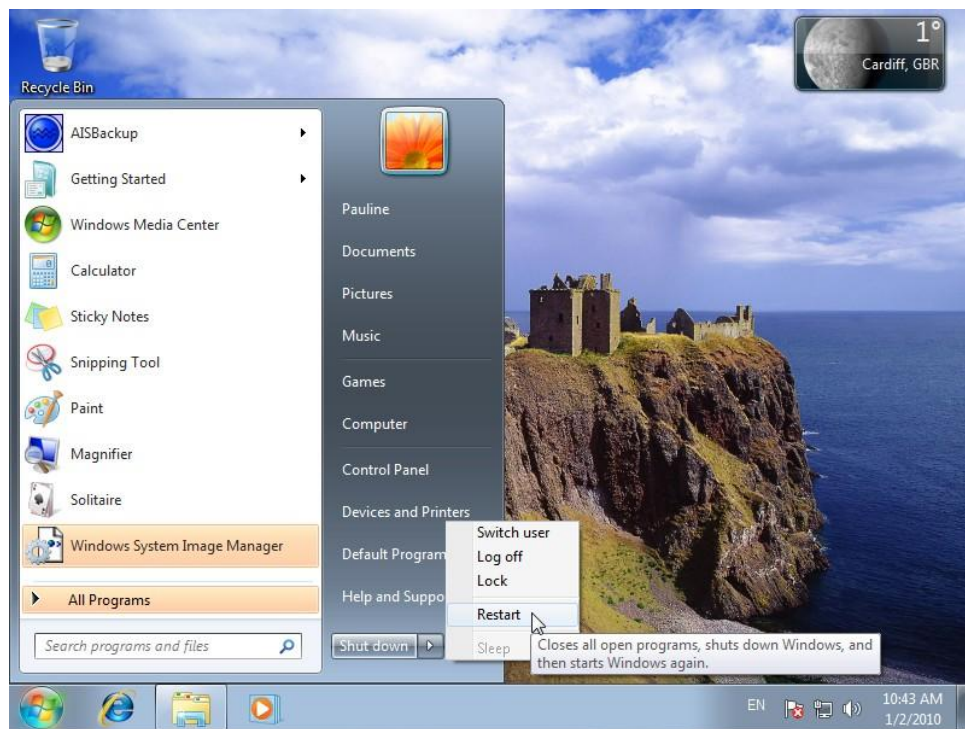


Load a blank CD when requested, then click **OK**.



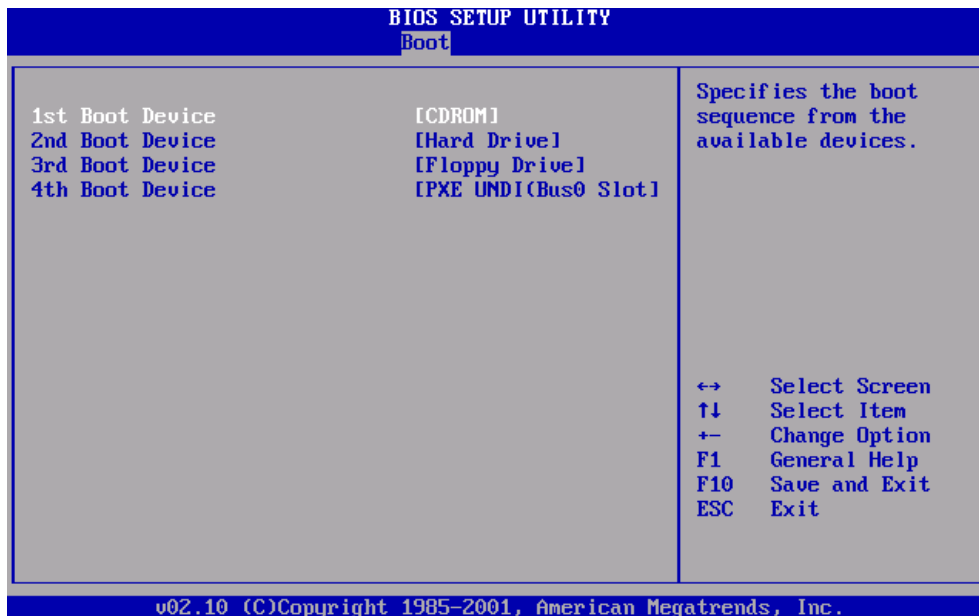
Then wait for the burn process to complete.

It is recommended that you test the AISBackup Restore CD.



Select **Restart**.

You may need to select *Boot Options* during the restart procedure in order to boot from CD, on some PC's this may mean selecting a keyboard function key, e.g. F12. On some PC's the boot order must be selected from CMOS/BIOS settings; to enter CMOS/BIOS settings you just use keyboard options, e.g. pressing the **Delete** button during re-boot. (See you PC guide book)

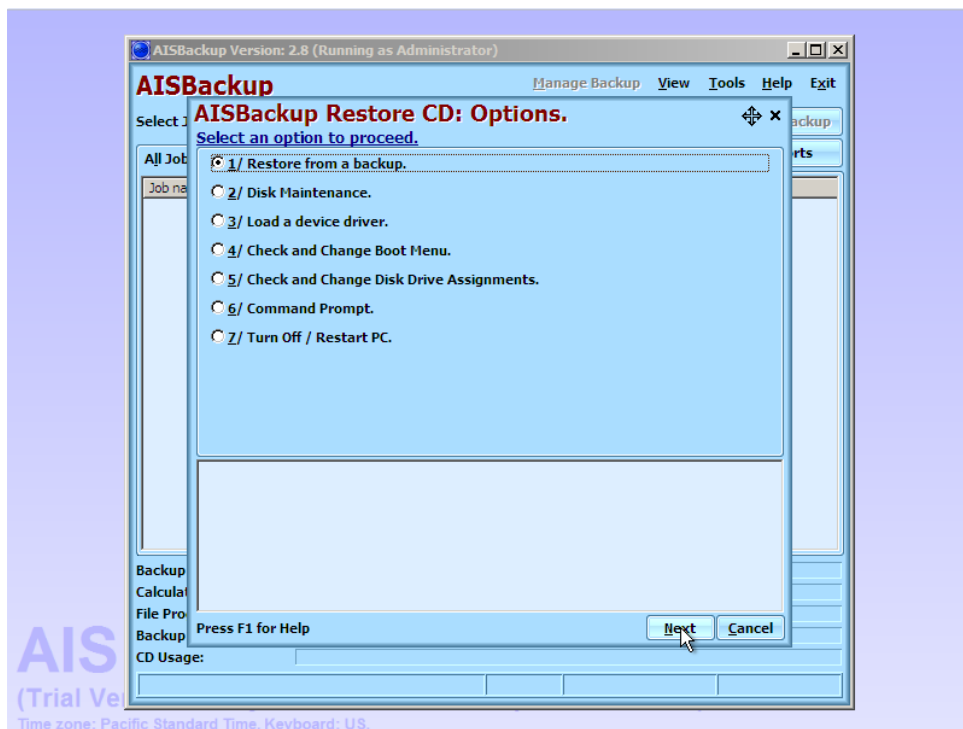


This option shows the Boot order settings with the CDROM set to boot before the Hard Drive; the default setting on this PC was Hard Drive before CDROM.

There is a CD boot delay build into the CD so that you must press *any key* to boot from the AISBackup Restore CD.



On some PC's the AISBackup Restore CD may appear to hang on this screen for several minutes while Windows initialises.



The AISBackup Restore CD is ready for use.